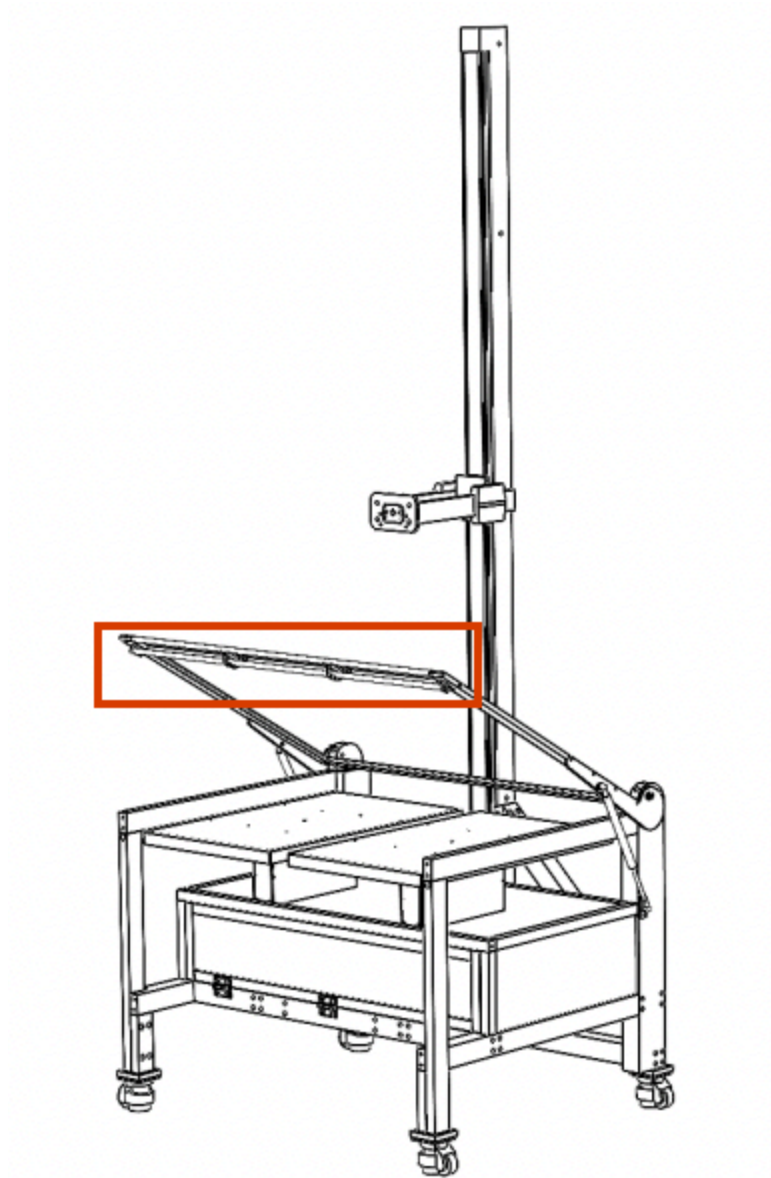


DT Versa Glass Top Latch Replacement Instructions



The DT Versa features an ergonomic glass top latch that allows for the lift and locking of the glass platen. This component has been carefully selected and tested for maximum durability and reliability. However, as with any moving part, it will eventually wear and require replacement.

CAUTION: The purpose of this document is to provide a reference for you when replacing the DT Versa glass top latch. This service operation can be completed by the customer without an on-site DT Technician, but it should be executed by someone comfortable working on mechanical devices.

Once you have received your equipment, please reach out to support@digitaltransitions.com or call +1 (212) 529-6825 option #4 to schedule a time with our team to assist you in performing the gas spring replacement.

DT will not be held responsible for any damage or injury caused by improper installation or calibration in the event that the user attempts to install the equipment without a support team member present remotely.

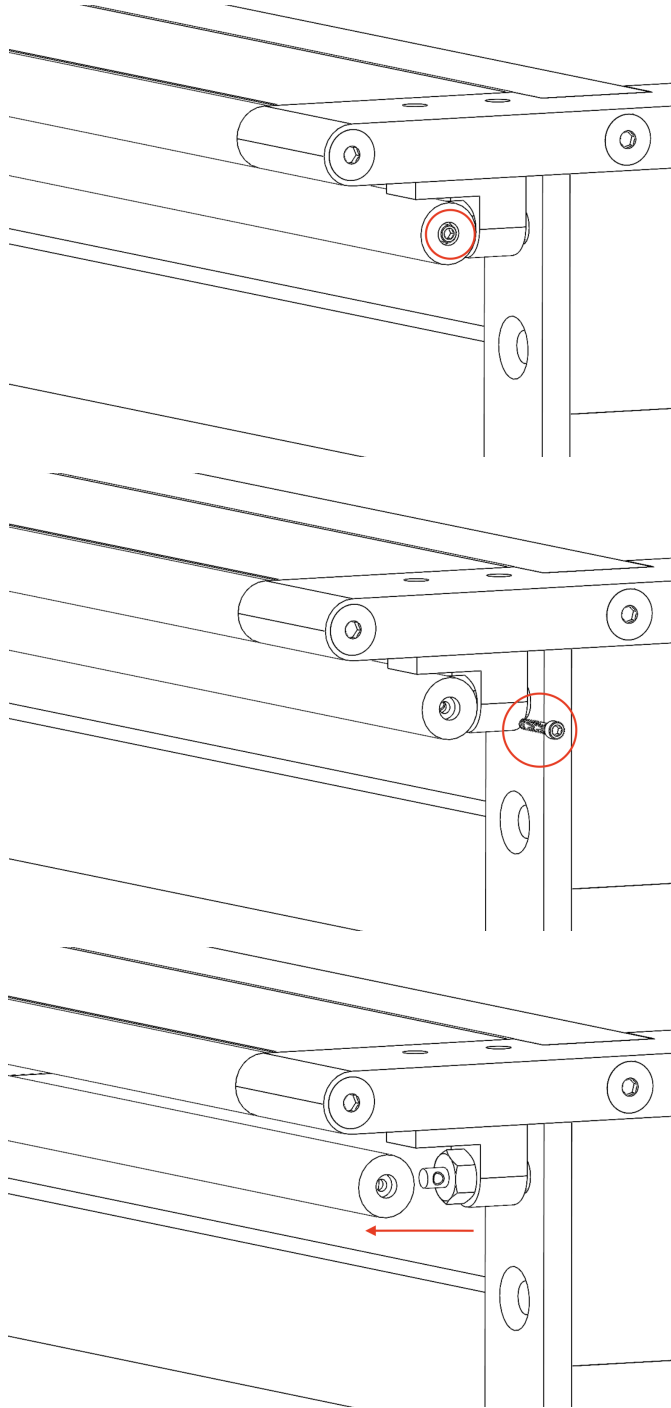
It is essential that at least two people work on the installation. Each should be comfortable with lifting weights of up to 25 lbs.

Please reach out to us at support@digitaltransitions.com and we will be more than glad to discuss any questions or concerns you might have.

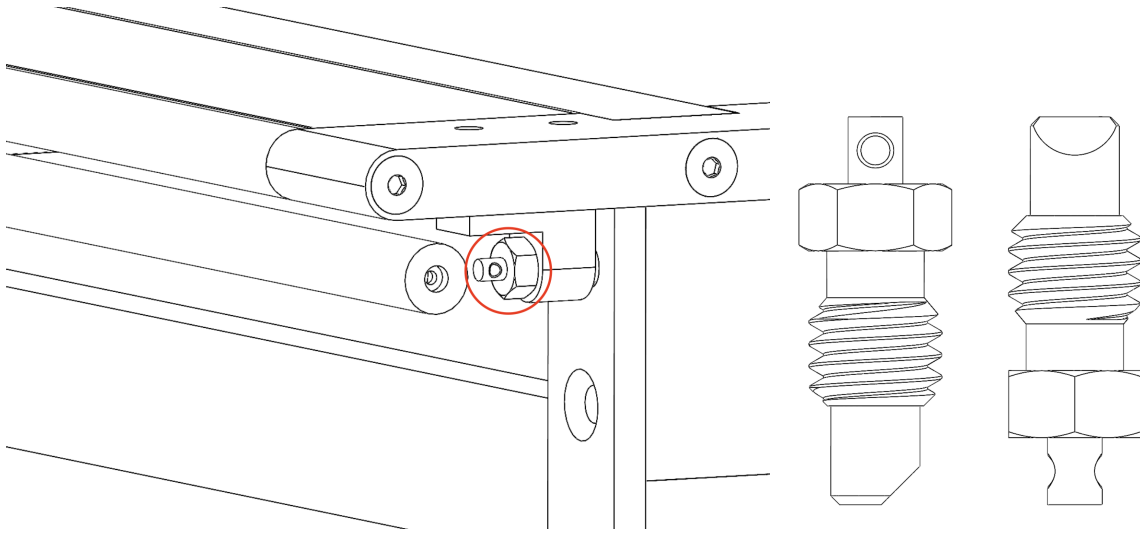
Sincerely,

The Digital Transitions Technical Support Team

1. To remove the glass top latch, remove screws on each side that secure the latch to release the handle. Use a 2mm hex wrench for this.



2. Unscrew the latch bolt by using an adjustable wrench or pliers



3. Install the replacement part and re-secure handle.
4. If the latch spring is not catching/locking to the bench properly, the receiving plate can be adjusted by slightly loosening the two bolts so the latch spring is seated properly. Retract the handle to access the main body of the latch.

